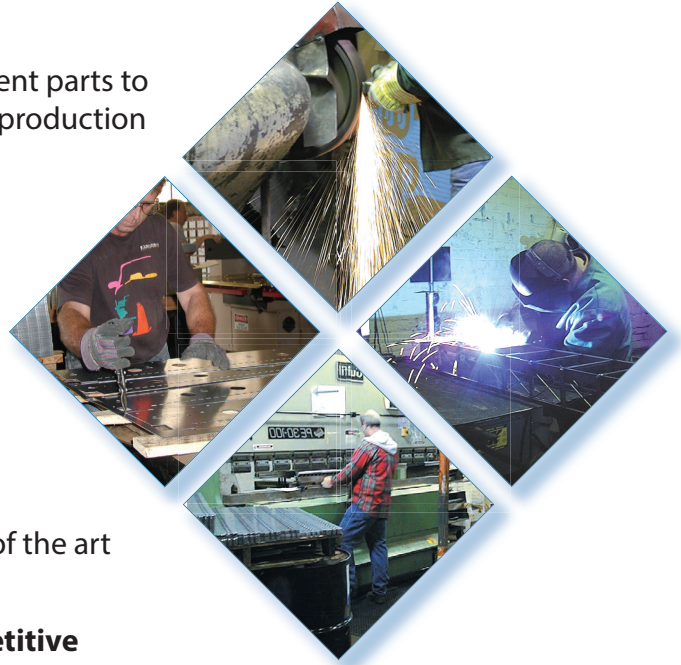


# Boss Metal Fabricators, Inc.

Here they are — the qualities you are searching for!

- ◆ **Large or small quantities:** from component parts to complete assemblies, from prototypes to production runs.
- ◆ **Your Industry:** Boss handles work from a variety of industries, including yours!
- ◆ **State of the art equipment:** in tune with industry advancements and technology, Boss uses the latest computer-integrated metalworking technologies, along with an array of CNC machines and state of the art equipment.
- ◆ **Many processes in-house means competitive pricing.** Your job will be done with quality, efficiency and good communication.
- ◆ **Materials:** Boss works with 95% metal products (steel and stainless steel primarily, but also aluminum), 5% plastic or wire fabrication. We can also incorporate glass or wood into your design.
- ◆ **Experience, longevity and respect in the industry:** Now in business 30 years, Boss Metal is made up of industry professionals. Their longevity reflects the way customers choose to come back again and again!



**NOW!  
In Business  
30 Years!**

Call or email. We are ready to put our professional staff and equipment to work for you!

**boss**

**Boss Metal Fabricators, Inc.**  
1125 Montgomery St. | St. Louis, MO 63106  
314-231-9999, ext. 24 | [bossmetalfab.com](http://bossmetalfab.com)  
Email: [robert@bossmetalfab.com](mailto:robert@bossmetalfab.com)

# Boss Metal Fabricators, Inc.

- ◆ OEM Components
- ◆ Racks, Cabinets and Shelves
- ◆ Display Fixtures
- ◆ Signage: indoor and outdoor
- ◆ Prototypes
- ◆ Production Runs
- ◆ Component Parts
- ◆ Completed Assemblies



## Processes completed in-house:

- ◆ Stamping
- ◆ Punching
- ◆ Bending
- ◆ Welding
- ◆ Drilling
- ◆ Cutting
- ◆ Grinding
- ◆ Rolling
- ◆ Notching
- ◆ Perforating

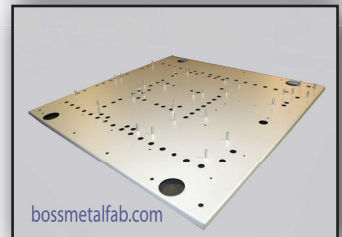
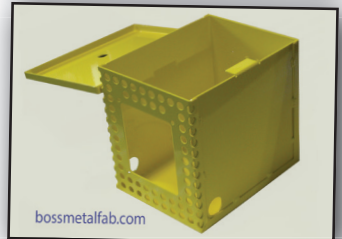


## Metal Finishing:

- ◆ Plating
- ◆ Powder Coating / Painting
- ◆ Polishing
- ◆ Anodizing
- ◆ Machining
- ◆ Brazing
- ◆ Deburring
- ◆ Shearing
- ◆ Assembly, Packaging & Shipping



Boss delivers peace of mind to meet your deadline with quality, custom work. Call or email us today about your job!



# boss

**Boss Metal Fabricators, Inc.**  
1125 Montgomery St. | St. Louis, MO 63106  
314-231-9999, ext. 24 | fax: 314-231-2062  
Email: [robert@bossmetalfab.com](mailto:robert@bossmetalfab.com)  
Web: [bossmetalfab.com](http://bossmetalfab.com)